

# public transport in northamptonshire

from 15 April 2007

## Northamptonshire bus services

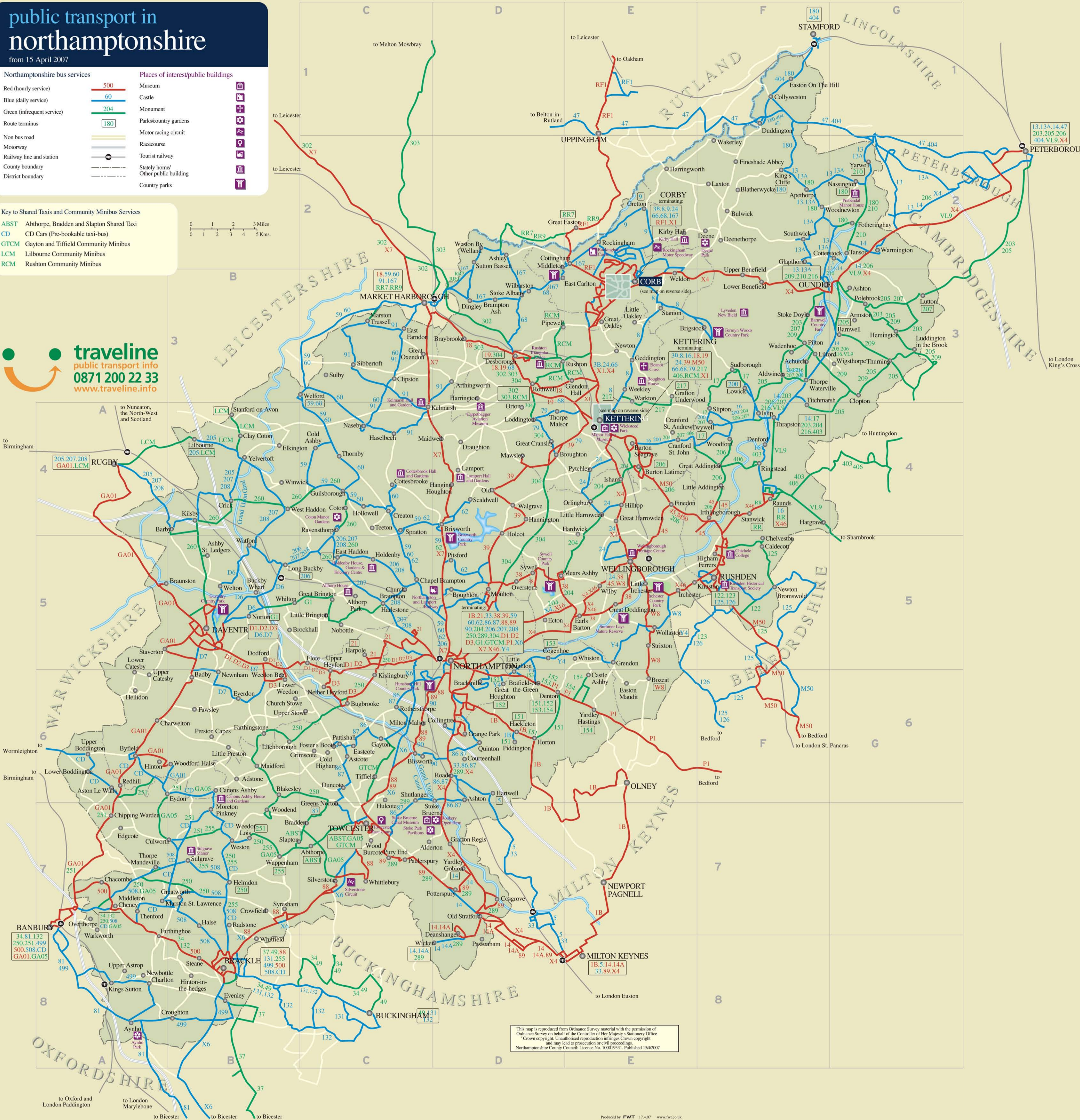
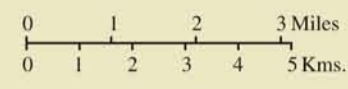
- Red (hourly service)
- Blue (daily service)
- Green (infrequent service)
- Route terminus
- Non bus road
- Motorway
- Railway line and station
- County boundary
- District boundary

## Places of interest/public buildings

- 500
- 60
- 204
- 180
- Museum
- Castle
- Monument
- Park/country gardens
- Motor racing circuit
- Racecourse
- Tourist railway
- Stately home/Other public building
- Country parks

## Key to Shared Taxis and Community Minibus Services

- ABST Abthorpe, Bradden and Slapton Shared Taxi
- CD CD Cars (Pre-bookable taxi-bus)
- GTCM Gayton and Tiffeld Community Minibus
- LCM Lilbourne Community Minibus
- RCM Rushton Community Minibus



**traveline**  
public transport info  
0871 200 22 33  
www.traveline.info

This map is reproduced from Ordnance Survey material with the permission of Ordnance Survey on behalf of the Controller of Her Majesty's Stationery Office. Crown copyright. Unauthorised reproduction infringes Crown copyright and may lead to prosecution or civil proceedings. Northamptonshire County Council: Licence No. 100019331. Published 15/04/2007